

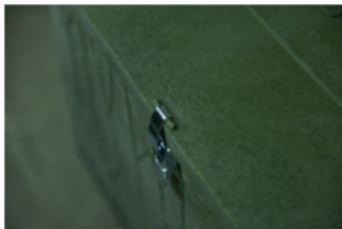
# FEEDBANK 600

---

## INCLUDED PARTS:

(1) Feeder	(1) Cover
(4) Feed Ports	(8) 1" Fender Washers
(8) T-Style Thumb Bolts	(8) 1/4" Lock Washers

1. Unpack the Feedbank from the box. You should have 6 main parts.
2. To attach cover, place it on top of the feeder so the locking tabs are above the (2) latches on each side. Latch over the top of the tabs to secure the cover.



3. To install the feeder port, first take a t-style thumb bolt and slide a lock washer on and then a fender washer. Take the t-style thumb bolt with washers and slide the bolt from the inside of the port out. Match up to the threaded insert at the bottom of the body of the feeder and screw the bolt to it, attaching the feed port. Do the same thing to the second bolt for that feed port. Repeat this for all ports.



## FEEDBANK 600

---

4. After the cover and Feeder Ports are installed, you need to purchase an 8' 6x6 green-treated post. Dig into the ground 3' and backfill the post so it is level.
5. Slide Feedbank over the post.
6. Another option is to cut off a tree and slide it over a trunk of the tree - just be sure to cut it off level.
7. Fill with feed. All feed ports slide in and out, when t-style thumb bolt is loosened to control flow. Set flow according to type of feed you are using.
8. Your Feedbank is ready to go!

