



INSTRUCTION MANUAL

TABLE OF CONTENTS

Stump Overview.....	3
Stump 2 Assembly.....	4
Stump 3/4/Sequoia Assembly.....	5
Stump 2 Scout/Ice Assembly.....	6
Stump 4/Sequoia Scout/Ice Assembly.....	7
Locking Door Handle.....	8
Bow Hanger.....	9
Curtain Kit.....	10
Framed Window.....	11
Storage Shelf.....	12
Carbon Filters.....	13
Warranty Information.....	14
Warranty Registration Card.....	15
Company Information.....	16

STUMP OVERVIEW

CONGRATULATIONS ON PURCHASING YOUR NEW STUMP BLIND!

The Stump has been providing comfortable and enjoyable hunting since 2003. To ensure safety and longevity, we ask that you please follow the instructions carefully. If during the assembly you have any questions, please call: 800-262-4129 from 8am-5pm M-F central standard time.

Whether you are using your Stump to introduce a young hunter to the woods or positioning yourself for the hunt of a lifetime, you will quickly realize that this blind is one of the most valuable tools you have in your arsenal.

CONTENTS IN THIS PACKAGE:

1. Stump Blind
2. Assembly Hardware
4. Steel Base
5. Wood Floor
6. Foam Floor Mat
7. Instruction Manual

STUMP 2

TOOLS NEEDED:

- 1/2" Nut Driver
- Flat Head Screwdriver
- Phillips Screwdriver/Bit
- Cordless Drill
- 1/4" Drill Bit
- 7/16" Wrench
- 3/8" Wrench

INCLUDED PARTS:

- | | |
|----------------------|------------------------------|
| (1) Stump Blind | (1) Door Handle |
| (1) Steel Base | (1) Grab Handle |
| (1) Wood Floor | (2) 1/4x1" Washers |
| (8) Lag Bolts | (2) 10/24x1" Bolts |
| (1) Shelf | (2) 10x24 Lock Nuts |
| (2) 1/4-20 Lock Nuts | (2) 1/4-20 x 1" Handle Bolts |
| (2) 1/4" Washers | |

1. Attach the outside door handle to open door. Insert flat head door handle bolt into black handle then attach it to the door latch and tighten.

2. Place your grab handle on the outside of the blind to the left of the door. See the two predrilled holes. On the outside of the blind place the handle over the holes, run your (2) 1/4-20 x 1" Handle Bolts through the handle and into the stand. Insert a fender washer on the inside on each of the bolts. Fasten down with your 10-24 lock nuts and tighten to a snug fit. **DO NOT OVER TIGHEN!**

3. Install your one shelf. Hold your shelf in the desired location on the wall of your blind. In the slots below the shelf drill a 1/4" hole into the wall of the blind. Bolt the shelf to the blind using the (2) 1/4-20 x 1 1/4" bolts, 1/4" fender washers, and 1/4-20 nuts.



4. (To Elevate Wood Legs) Set the stand on its side. Take your green treated 4 x 4 posts and slide them into the steel pockets on the base. Install two lag screws into each post through the holes on each steel pocket.

Cross brace all your legs for added support. You are ready to elevate your Stump.

NOTE: Maximum height is 12ft. to the angled base.

STUMP 3 / 4 / SEQUOIA

TOOLS NEEDED:

- 1/2" Nut Driver
- Phillips Screwdriver/Bit
- Cordless Drill
- 1/4" Drill Bit
- 7/16" Wrench

INCLUDED PARTS:

- | | |
|-----------------|---------------------------|
| (1) Stump Blind | (1) Foam Floor Mat |
| (1) Steel Base | (1) Shelf |
| (1) Wood Floor | (2) 1/4-20 x 1 1/4" Bolts |
| (8) Lag Bolts | (2) 1/4-20 Lock Nuts |
| | (2) 1/4" Washers |

1. Install your shelf. Hold your shelf in the desired location on the wall of your blind. In the slots below the shelf drill a 1/4" hole into the wall of the blind. Bolt the shelf to the blind using the (2) 1/4-20 x 1 1/4" bolts, 1/4" fender washers, and 1/4-20 nuts.



2. (To Elevate Wood Legs) Set the stand on its side. Take your green treated 4 x 4 posts and slide them into the steel pockets on the base. Install two lag screws into each post through the holes on each steel pocket.

Cross brace all your legs for added support. You are ready to elevate your Stump.

NOTE: Maximum height is 12ft. to the angled base.

STUMP 2 SCOUT & ICE

TOOLS NEEDED:

- Flat Head Screwdriver
- Phillips Screwdriver/Bit
- Cordless Drill
- 1/4" Drill Bit
- 7/16" Wrench
- 3/8" Wrench

INCLUDED PARTS:

- | | |
|----------------------|---------------------------|
| (1) Stump Blind | (1) Foam Floor Mat |
| (1) Sled Base | (1) Door Handle |
| (1) Wood Floor | (1) Grab Handle |
| (1) Steel Hitch | (2) 1/4x1" Washers |
| (1) Shelf | (2) 10/24x1" Bolts |
| (2) 1/4-20 Lock Nuts | (2) 10x24 Lock Nuts |
| (2) 1/4" Washers | (2) 1/4-20 x 1 1/4" Bolts |

1. Attach the outside door handle to open door. Insert flat head door handle bolt into black handle then attach it to the door latch and tighten.

2. Place your grab handle on the outside of the blind to the left of the door. See the two predrilled holes. On the outside of the blind place the handle over the holes, run your (2) 10-24 x 1 1/4" handles bolts through the handle and into the stand. Insert a fender washer on the inside on each of the bolts. Fasten down with your 10-24 lock nuts and tighten to a snug fit. **DO NOT OVER TIGHEN!**

3. Install your shelf. Hold your shelf in the desired location on the wall of your blind. In the slots below the shelf drill a 1/4" hole into the wall of the blind. Bolt the shelf to the blind using the (2) 1/4-20 x 1 1/4" bolts, 1/4" fender washers, and 1/4-20 nuts.



Your Assembly is Complete!

STUMP 4 / SEQUOIA SCOUT & ICE

TOOLS NEEDED:

- Phillips Screwdriver/Bit
- Cordless Drill
- 1/4" Drill Bit
- 7/16" Wrench

INCLUDED PARTS:

- | | |
|-----------------|---------------------------|
| (1) Stump Blind | (1) Foam Floor Mat |
| (1) Sled Base | (2) 1/4-20 x 1 1/4" Bolts |
| (1) Steel Hitch | (2) 1/4-20 Lock Nuts |
| (1) Shelf | (2) 1/4" Washers |

1. Install your shelf. Hold your shelf in the desired location on the wall of your blind. In the slots below the shelf drill a 1/4" hole into the wall of the blind. Bolt the shelf to the blind using the (2) 1/4-20 x 1 1/4" bolts, 1/4" fender washers, and 1/4-20 nuts.



Your Assembly is Complete!

LOCKING DOOR HANDLE

TOOLS NEEDED:

- Flathead Screwdriver
- Cordless Drill
- 1/4" Drill Bit

INCLUDED PARTS:

- (1) Locking Handle
- (1) Attachment Screw
- (1) Set of Keys
- (1) Cap

1. Have door handle in open (vertical) position. Using a 1/4" bit, slowly screw a hole in the middle of the handle, removing the cap and revealing the screw.



2. Make sure the door handle is in the closed (horizontal) position and unscrew the handle.



3. Put the new handle on making sure it fits into place. Make sure the handle rotates correctly. Screw to a tight fit. Place black cap over exposed screw.



BOW HANGER

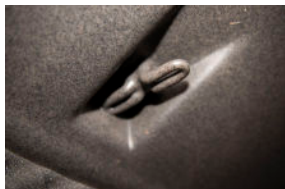
TOOLS NEEDED:

- Phillips Screwdriver/Bit
- Cordless Drill
- 1/4" Drill Bit
- 7/16" Wrench

INCLUDED PARTS:

- | | |
|----------------|--------------|
| (1) Bow Hanger | (1) Lock Nut |
| (1) 1/4" Bolt | (1) Washer |
| (1) Lock Nut | |

1. Find attached anchors on the inside of the roof of your Stump. There will be two to choose from.



2. Insert the bolt into the Bow Hanger and insert the bolt through the black bushing.



3. Insert the bolt through your drilled hole. On top of the blind, place the washer on the bolt, then place the lock nut on the bolt and tighten to a snug fit.



CURTAIN KIT

INCLUDED PARTS:

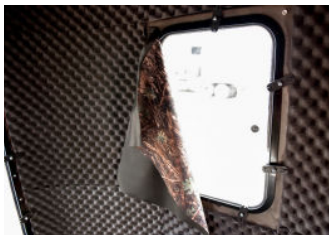
(2) Magnets/Screws per Curtain

*Number of curtains varies per blind

1. Hold the curtain up to the window & line up where to attach the magnets.
2. Screw in the magnets.



3. Attach the curtains to the magnets. Make sure the curtain covers the window.



4. Curtains are reversible to allow black or camo to face out.



FRAMED & VISION WINDOW

INCLUDED PARTS:

- Framed Window
- 1/4-10 x 5/8" Pan Head Self-Tapping Bolt

1. Unpack items. **If applying to a Banks Blind proceed to step 3. If applying to another, proceed to step 2.**
2. Cut out an opening for the Framed or Vision window to fit into.
 - 2a. *Notice radius corners & cut opening accordingly.
 - 2b. Insert Framed Window into the opening & drill out the attachment holes.
3. From the inside of the blind, insert the Framed Window into the window opening on the blind. (If the attachment holes do not line up, re-drill the holes out.) From the outside of the blind, attach the frame using the 1/4-10 x 5/8" self-tapping bolts.
4. Installation of your Framed Window is complete.



STORAGE SHELF

INCLUDED PARTS:

- | | |
|-------------------------|----------------------|
| (1) Storage Shelf | (2) 1/4-20 Lock Nuts |
| (2) 1/4-20 x 1.5" Bolts | (2) Washers |
| (1) Stump Light | |

1. Place your Storage Shelf in desired location in your blind.



2. Drill your (2) attachment holes into the blind by using the storage shelf as your template. We recommend using a level.



3. Attach the Storage Shelf to the blind using the 1/4-20 x 1.5" bolts and washers.
4. Fasten the shelf to the blind using the 1/4-20 lock nuts. Tighten to a snug fit.
5. Attach light to the bottom of the shelf with screws included with light



CARBON FILTERS

1. Unpack Carbon Filters.
2. From the inside of the blind, insert into the round vents.
3. Carefully bend two of the tabs from the vent over the top of the Carbon Filter to hold it into place.
4. Repeat steps 2 & 3 for second Carbon Filter.

Your Assembly is Complete!



WARRANTY

LIMITED LIFETIME WARRANTY

The Banks Outdoors product(s) purchased from our authorized dealers is warranted to be free from defects in material and workmanship for as long as the registered original owner owns the blind. Banks Outdoors will repair or replace your product, with the same or comparable model free of charge (shipping charges not included) for life, once the product has been registered with Banks Outdoors, in the event of a defect in materials or workmanship occurring during normal use. The warranty only extends to the original retail purchaser named on the product registration.

The product must be registered on www.banksoutdoors.com or by mail before warranty performance.

WHAT IS NOT COVERED?

Not covered under this warranty are failures due to misuse, abuse or normal wear and tear and improper installation. Additionally, failures due to acts of God & nature, such as storms, strong winds, and animal damage are not covered by this warranty. **Accessory products are not covered.**

NO ADDITIONAL WARRANTY APPLIES

The Limited Lifetime Warranty is the exclusive warranty for Banks Outdoors products. Dealers, Retailers, or Representatives are not authorized to alter this warranty or create additional warranties on behalf of Banks Outdoors.

HOW TO SUBMIT A WARRANTY REQUEST

Please call 1-800-262-4129.

To become a registered owner of your Banks Outdoors Stump Blind, please complete the online Product Registration form at www.banksoutdoors.com, or submit your registration by mailing the card included with your product.

Your product needs to be registered in order to take advantage of the Limited Lifetime Warranty.

WARRANTY REGISTRATION CARD

The product must be registered on www.banksoutdoors.com or by mail before warranty performance.

NAME: _____

ADDRESS: _____

CITY: _____ STATE: _____ ZIP: _____

EMAIL: _____

PHONE NUMBER: _____

PRODUCT: _____

SERIAL #: _____ DATE OF PURCHASE: _____

PURCHASE LOCATION: _____

Mail to: **BANKS OUTDOORS - 31785 64TH AVE CANNON FALLS, MN 55009**

- Lumber is not included in any of our packages.
- Height limit for Blinds - 12 feet (recommended)
- We suggest green treated lumber for Stump legs.
- Angled bases are included with each Stump blind.



31785 64TH AVE CANNON FALLS, MN 55009

1-800-262-4129

WWW.BANKSOUTDOORS.COM